

# GRAYT INTERACTIVE FLAT PANEL

## GRAYT Interactive Flat Panel for Education & Business



65"

Grayt

75"

Grayt

86"

Grayt

98"

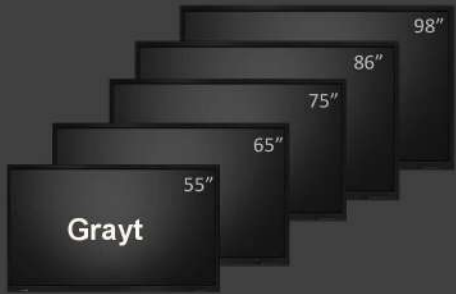
Grayt

A comprehensive offering to meet the needs of a wide range of applications

### Key features of GRAYT H-Series Series:

**2<sup>nd</sup> Generation ZERO BONDING TECHNOLOGY on Android 13 Platform**  
ensures feather smooth & real time writing experience

- 4K UHD (3840 × 2160) @ 60Hz
- 4mm Toughened Glass
- Advanced IR technology
- touch points **40**
- Brightness: upto 500 cd / m<sup>2</sup>
- Static Contrast: upto 5000:1
- Response Time Continuity < 2 ms
- BYOD enabled Wireless Casting
- Upto 60,000 hrs panel life
- +/-1 mm touch accuracy
- Android 11.0 Upgradable to 13
- 8GB RAM, upto 128GB ROM
- Quad-Core / Octa Core ARM Cortex-A55
- Mali-G52 MP2 (2EE)
- Powerful Speakers
- Content Sharing using QR Code
- Advanced Interactive Software
- Customised OPS options. loaded with Digital Canvas IWB Software Suite
- FREE Wall Mount Kit, Floor Mount (Optional)



## A Complete Range of Interactive Displays



Grayt Interactive Flat Panel aids teaching and learning. We provide reliable, high quality yet affordable Interactive Flat Panel Display (IFPD) systems with precise interactive experience, which are ideal for use in classrooms, training rooms, learning centres, and meeting rooms. We offer interactive tools to help teachers engage and inspire their students/learners.

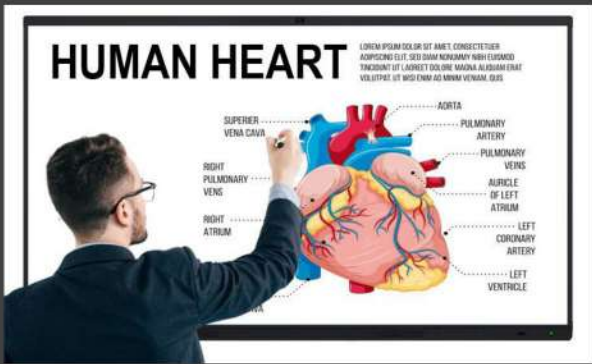
### Super Accurate Touch Experience:

GRAYT Interactive Flat Panels are powered by **Zero Bonding Technology**, supports up to 40 simultaneous multi-touch points. At every channel, you can write, annotate, and take screenshots. creating a precise and fluid writing experience. It also supports Multi-touch gesture control, annotation with multiple pens and colors, gestures to erase, zoom in/out, drag and many more



### Engage Students Like Never Before :

When students learn or are taught using Grayt IFPD, our products ensure that the amount of attention, curiosity, enthusiasm, optimism, and passion they show extends to their motivation to learn and succeed in their education. Simple Design, 4K Resolution, Intuitive Interactive software , Full K12 content support (Optional), Teachers can improve learning outcomes using responsive touch, rich yet simple to use interactive software.



### Multiply your meeting room productivity

Start Meetings Instantly - More Engaging Presentations - Efficient Information Flow - Increased Collaboration In Meetings - Connect Your Personal Devices - An incredible combination of Touchscreen interactivity and Visual Collaboration.



### Stunning Display Quality

GRAYT Interactive panels produces Amazing Visual experience with bright, sharp image & video quality with Ultra HD 4K display resolution & super high contrast. Crystal clear display, incredible details, and beautiful pictures combine to provide a true visual feast.

### Connecting Mobile Devices

GRAYT Interactive Flat Panel software develops a Wi-Fi-based system for enabling mobile terminal and IFPD interaction. You can use the system to link the IFPD to a mobile terminal, take a photo and exhibit it on the IFPD, control the IFPD from the mobile terminal, post comments, present courseware, and send files.



## Powerful And Crisp Sound

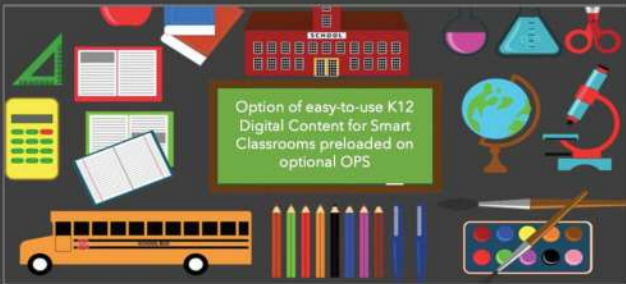
Grayt Interactive Panel uses a unique cavity acoustic structure, the sound is powerful, rich, wide, and sensitive, allowing all participants to experience amazing clarity as well as loud audio output.



## Proudly Manufactured in India

Getting Inspired by the aim of GOI, team GRAYT have started manufacturing of GRAYT Interactive panels in India (SKD/CKD production) with the goal of exporting them worldwide.

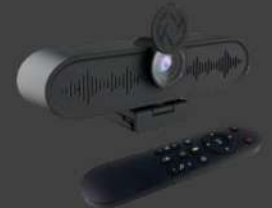
**DIGITAL CANVAS** is an advanced interactive whiteboard software suite for education and corporate training. This software supports whiteboard functions such as writing, erasing, annotating, drawing, and gesture support on IWB/IFP. Furthermore, the flat panel's interactive multimedia functions, such as subject-specific tools and multimedia playback, enable enhanced interactive teaching and demonstration experiences.



## Full K12 Content (optional)

GRAYT Education series Interactive Flat Panels come bundled with Interactive, offline and easy to use K12 Digital Content for Smart Classrooms. The content is in sync with CBSE / ICSE / IB / State Board and supports India Regional Languages as well.

## Optional Accessories:



# GRAYT 75-inch Infinity Series Touchscreen Interactive Displays

<b>Interactive Flat Panel Display Model: GT75IFP</b>	
Diagonal display size	75 Inch
Bezel color	Aluminum frame Black color
Panel type	Anti-Glare LCD with Direct-lit LED
Active area (mm)	1649.7 × 927.9mm
Resolution	4K UHD - 3840 x 2160 / 60hz
Pixel Pitch	0.4935 mm x 0.4935 mm
Hardness Glass	Mohs 7 level or above
Glass Panel	Anti-Glare glass with zero bonding
Aspect Ratio	16:9
Contrast Ratio	5000:1
Brightness	400 / 450 / 500 cd/m2
Color depth	1.07 billion colors
Viewing angle	178°
Lifespan	60,000 hours
<b>Touch Type</b>	
Touch Technology	Infrared (IR) (Advanced Infrared Touch Technology)
Touch Interface	Touch Sensitive as well as Pen Driven
Multi Touch	40 points
Touch Precision	1 mm (over 90% Area)
Anti-light	Yes
Minimum object size	2mm
Touch Response Time	First Point <2 ms, Continuation <8 ms
Supporting OS	Windows 7/8/10/11; Android; Mac; Linux; Chrome OS
<b>Sound</b>	
Speakers	Inbuilt 2 Speakers
Front Speakers	20 W x 2
Total Power Amplifiers	40 W
<b>Front Side Connections</b>	
Front Keys Front Camera/MIC Provision	Power on/off; Signal source; Return; Main page; Menu; Volume down; Volume up, Option of Built-in Camera (13 MP or 48 MP) & 8 Array MIC
<b>Front / Bottom / Side Connections</b>	
TF Card	1
Audio out Audio in (optional)	1 + 1
USB 3.0	4
OTG USB-A 2.0	1
Touch out USB B type	1
LAN-Port IN Out	RJ45 in x1, RJ 45 Out x 1 (Optional)
SPDIF	1
HDMI IN	2 Ports (Optional up to 4 Ports)
VGA	1 (Optional)
RS 232	1 (Optional)
Optical Port	1 (Optional)
USB-B (touch)	1
HDMI OUT	1
DP	1(Optional)
USB Type C	2
Windows OPS Slot	80-pins OPS slot
WiFi Standard	Wifi 802.11n (2.4 GHz and 5 GHz) Dual-Band capability
Bluetooth version	5.0 / 5.2 / 5.3
<b>Touch Central</b>	
Android Version	Android 13/14
CPU	High-End (8 Cores A55)
GPU	High-End Mali-G52 MP2

## Contact us:

### GRAYEYE IT SYSTEMS PRIVATE LIMITED

Work-EZ The Ark, No: 449/2C1A1, Rajiv Gandhi Salai, OMR, Sholinganallur, Chennai - 600 119

Phone No.: +91 8925876450

Email: support@grayeyeit.com

Website: www.grayeyeit.com



Bulid Technology with Value

# GRAYT 75-inch Infinity Series Touchscreen Interactive Displays

Memory	4GB / 8 GB
Storage	32GB/ 64GB / 128 GB
Compliant with	Windows; Mac; Linux; Chrome OS
Over-the-Air Updates (OTA)	YES
<b>General Information</b>	
Power Supply	~ 100-240 V (50/60Hz)
Switch On / Off	Yes
Standby Energy Consumption	<0.5 Watt
Net Weight	50
Gross Weight	60
Screen Dimensions	1953.493.11151.4mm
VESA Standard	400x800mm, 4xM8
<b>Environmental conditions</b>	
Operating Temperature	0°C - 38C/32- 100 F
Storage Temperature	-10°C- 60°C/-4 - 140 °F
Storage Humidity	10 %-60%
Usage Humidity	20 %-85%
<b>Accessories</b>	
Accessories	Stylus x2, Remote control x1, 1.5m power cord x1, 1.5m HDMI cable x 1, 1.5m USB touch cable x 1; wall mount kit x 1
OPS Computer (Optional)	Customised OPS computer with options of Core i3/ i5/ i7 CPU, customised SSD, HDD, RAM OS available
<b>Software</b>	
Device Management Software	Yes-Optional
Interactive Software	On Android embedded system contains feature rich & advanced Interactive Whiteboard Software On Windows Feature rich DIGITAL CANVAS IWB suite is available for interactive usage with OPS or External PC/ Laptop
Warranty	3/5 Years Onsite Warranty

## Optional Accessories



**Floor Mount Kit for Panel**



**A wide choice of OPS**



Disclaimer: Due to product configuration and manufacturing process, actual body assembly weight may vary please refer to the actual product. The product images in this specification are for illustrative purposes only, may be adjusted and revised in order to match the actual product performance and specifications. In the event that such changes and adjustments are necessary, no special notice will be given. The actual product specifications (including but not limited to appearance, color and size) may vary slightly. Please refer to the actual product in order to provide accurate specifications as far as possible, the text expressions and pictures in this specification may be adjusted and revised in real-time. The product specifications.

### Contact us:

#### GRAYEYE IT SYSTEMS PRIVATE LIMITED

Work-EZ The Ark, No: 449/2C1A1, Rajiv Gandhi Salai, OMR, Sholinganallur, Chennai - 600 119

Phone No.: +91 8925876450

Email: support@grayeyeit.com

Website: www.grayeyeit.com



Bulid Technology with Value