



A Learning Management System **LMS** is essential in schools as it servers as a comprehensive Digital Platform that revolutionizes the Educational Landscape. Providing a Centralized Hub, **LMS** facilitates efficient management of Educational Content, Assignments, Resources etc. Its flexibility allows Personalized Learning Experience, catering to Diverse Student Needs & Learning Styles. **LMS** enables seamless Remote Learning during crucial times of disruption. **LMS** also supports effective communication & collaboration among students, teachers & parents fostering a connected Learning Community. The Data Analytics capabilities of **LMS** empower schools with valuable insights, enabling informed decision making for improved teaching and learning outcome. In essence, **LMS** is indispensable.



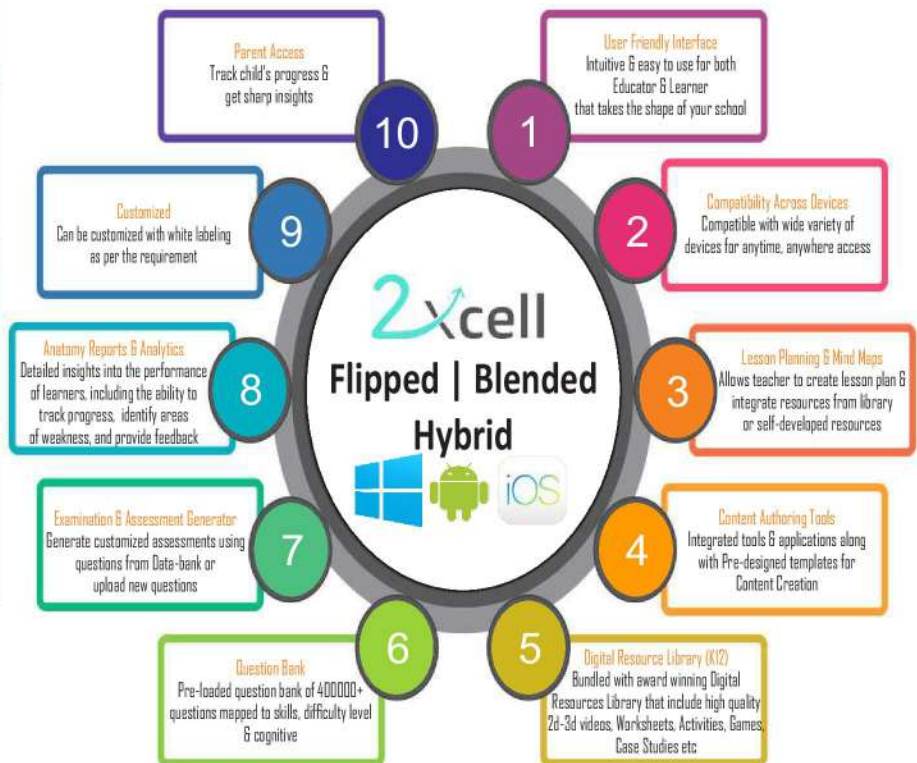
We got all your basic **LMS** needs covered

Our **AMS** (Academic Management System) offers much more than **LMS** and strengthens all the Four Academic Pillars for achieving

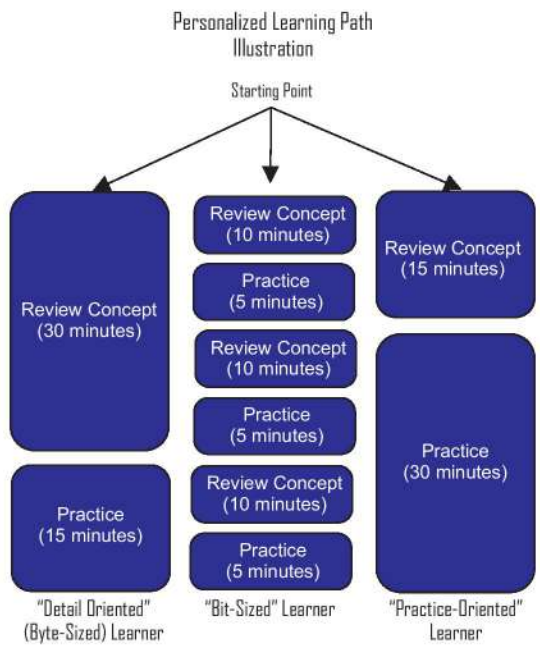


more than **LMS** and Academic Goals!

- Resource & Knowledge Management**
Intelligently manages all the Digital Teaching Assets of an Institution or Group of Institutions including Resources from any Academic Partner
- Outcome Multiplier for Teacher**
Gives multiplier to Teacher time through AI & Data driven Automation & Highlights Key Actionable Areas with Precise Inputs for 10x outcome
- Personalization for Learner**
AI analyzes the Data & creates Personalized Learning Path for each student based on their learning skills & pattern
- Parent as Partner**
Encourages Parents to become more involved with quick access to Sharp Data & Insights into their Child's Academic Progress & suggest key areas that require intervention



AI Learning & Assessment Platform



- Based upon patterns of learning of over millions of learners, our AI engine runs classification algorithms to create "Cohorts" of learners ("Learner Profiles") & recommended "learning path" for each of these Learner Profiles or Cohorts.
- For new learners, platform fits them into one of the most suitable Cohort based on initial assessment & learner demographics
- By default each learner is recommended a unique learning path based on his Learner Profile
- As the learner starts using the platform, the platform picks up individual Learning Patterns over time and further customizes the Learning Path ensuring higher level of accuracy.

